



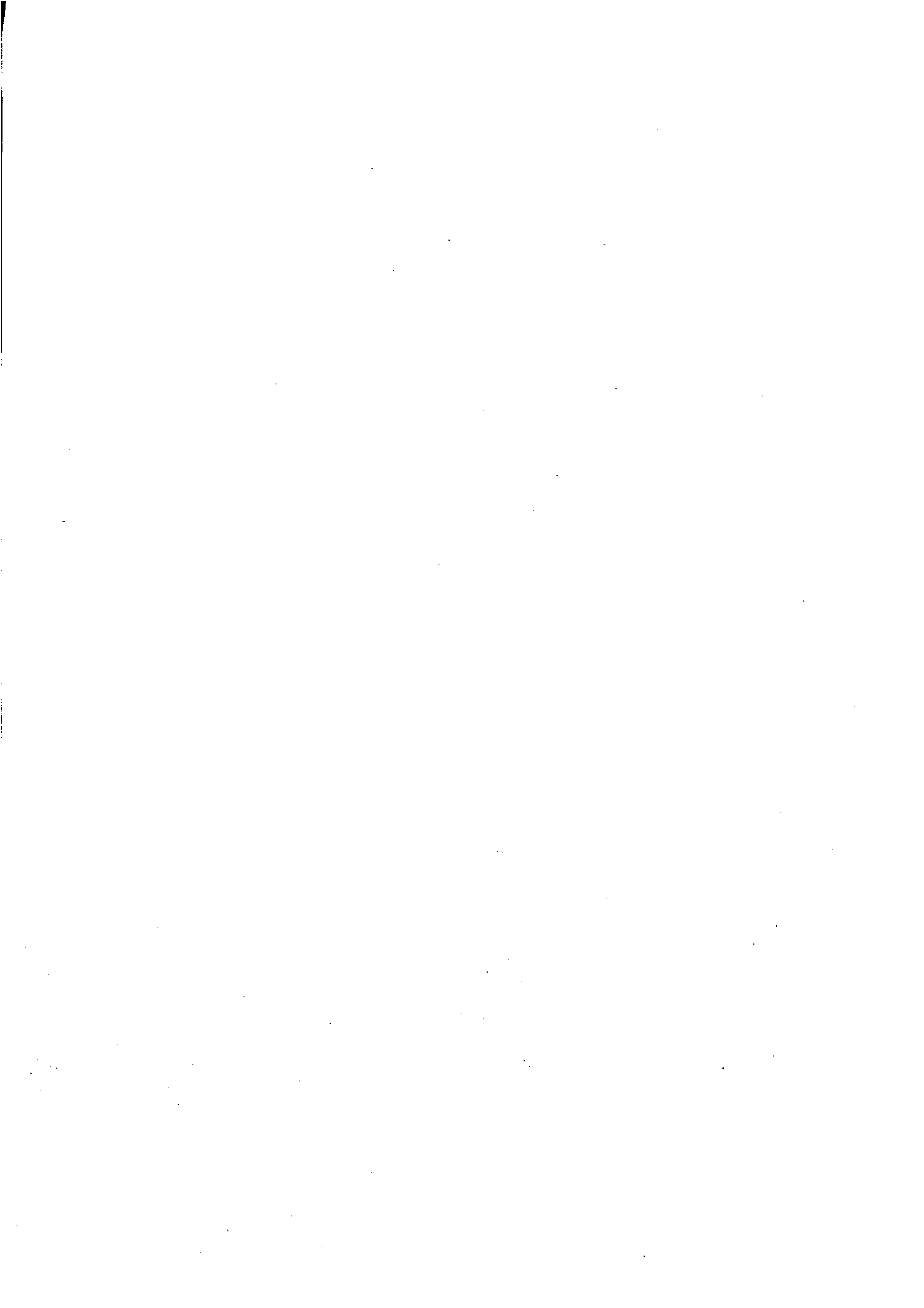
**Australian
Bureau of
Statistics**

**Manufacturing Production
Australia**

Building Materials and Fittings

September - November 1993

Catalogue No. 8361.0



EMBARGOED UNTIL 11:30 A.M. 1 FEBRUARY 1994

MANUFACTURING PRODUCTION, AUSTRALIA
BUILDING MATERIALS AND FITTINGS
SEPTEMBER - NOVEMBER 1993

IAN CASTLES
Australian Statistician

AUSTRALIAN BUREAU OF STATISTICS

CATALOGUE NO. 8361.0

© Commonwealth of Australia 1994

CONTENTS

<i>Table</i>		<i>Page</i>
1.	Clay bricks	1
2.	Terracotta and concrete roofing tiles	1
3.	Portland cement, portland cement clinker, concrete blocks, bricks and pavers and refractory construction materials	2
4.	Ready mixed concrete	2
5.	Particle boards and similar boards and sheets	3
6.	Stainless steel sinks and ceramic tiles	3
..	Explanatory Notes	4

INQUIRIES

- *for further information about statistics in this publication and the availability of related unpublished statistics, contact Rod Smith on Melbourne (03) 615 7635 or any ABS office.*
 - *for information about other ABS statistics and services please refer to the back page of this publication.*
-

TABLE 1. CLAY BRICKS
(million)

Period	For structural purposes (662,46,47)					Australia		For other purposes (incl. pavers) (662,48)
	NSW and ACT	Vic.	Qld	Other States	Original	Seasonally adjusted (a)	Trend (b)	
1990-91	725	372	278	387	1,762	228
1991-92	666	284	286	396	1,632	286
1992-93	687	304	322	409	1,722	296
1992 —								
September	67	28	29	38	161	149	140	26
October	55	25	28	33	140	132	142	27
November	57	25	27	32	141	140	143	24
December	57	25	23	34	139	149	143	25
1993 —								
January	38	11	22	23	94	145	144	25
February	53	24	25	34	136	146	145	24
March	67	30	31	36	164	143	146	27
April	54	26	27	34	141	144	147	22
May	65	27	27	40	159	150	148	24
June	61	32	28	41	162	153	150	24
July	63	27	29	35	154	148	r 150	27
August	66	30	r 30	40	r 166	r 156	r 150	24
September	59	27	31	38	156	148	150	27
October	57	25	30	36	147	143	149	31
November	63	28	31	39	161	152	148	32
1992-93: July to Nov.	292	128	139	169	727	125
1993-94: July to Nov.	307	138	150	188	784	141

(a) See paragraph 5 of Explanatory Notes. (b) See paragraph 6 to 8, Explanatory Notes.

TABLE 2. TERRACOTTA AND CONCRETE ROOFING TILES
(*000 square metres) (a)

Period	NSW and ACT	Vic.	WA	Other States	Australia		Total
					Terracotta (662,51)	Concrete (663,46)	
1990-91	7,245	4,296	2,733	5,546	3,898	15,922	19,820
1991-92	7,693	3,666	2,977	6,756	3,579	17,513	21,092
1992-93	8,821	4,056	3,669	7,312	3,652	20,206	23,858
1992 —							
September	864	395	311	694	347	1,916	2,263
October	773	340	308	621	316	1,726	2,042
November	785	328	317	599	328	1,702	2,030
December	724	357	305	538	259	1,664	1,923
1993 —							
January	236	150	215	200	167	634	801
February	772	278	293	649	249	1,742	1,991
March	946	373	341	795	320	2,136	2,455
April	581	352	293	619	312	1,534	1,845
May	817	407	330	650	344	1,860	2,204
June	781	371	329	683	342	1,823	2,165
July	741	367	341	684	322	1,811	r 2,133
August	759	327	324	660	320	r 1,750	r 2,070
September	775	288	335	706	312	1,792	2,104
October	725	338	346	678	324	1,762	2,086
November	780	375	401	698	311	1,942	2,253
1992-93: July to Nov.	3,963	1,767	1,563	3,178	1,659	8,813	10,472
1993-94: July to Nov.	3,778	1,694	1,747	3,426	1,588	9,058	10,646

(a) Refers to the theoretical effective coverage of the tiles if laid in an interlocking manner on a flat surface. For each type of tile, coverage is calculated using standard side lap and minimum head lap, without any provision for wastage.

TABLE 3. PORTLAND CEMENT, PORTLAND CEMENT CLINKER, CONCRETE BLOCKS, BRICKS AND PAVERS AND REFRACTORY CONSTRUCTION MATERIALS
(*000 tonnes)

Period	Portland cement and blended portland cement (661.22)			Portland cement clinker (661.21)	Refractory bricks and other refractory construction materials (662.30)	Concrete blocks bricks and pavers (c) (663.65)
	Original	Seasonally adjusted (a)	Trend (b)			
1990-91	6,110	5,599	136	1,903
1991-92	5,731	5,272	121	1,749
1992-93	6,225	5,466	128	1,862
1992 —						
September	473	466	490	452	11	161
October	519	471	490	463	11	162
November	552	507	494	453	11	162
December	498	512	501	431	11	141
1993 —						
January	404	573	513	430	9	93
February	510	554	524	411	10	154
March	536	515	r 534	514	12	177
April	508	527	r 541	513	11	148
May	613	577	r 543	381	12	168
June	546	542	r 543	464	11	176
July	558	527	r 539	552	10	171
August	572	544	r 536	591	10	178
September	518	508	534	464	11	210
October	594	552	533	452	11	182
November	594	535	531	570	12	205
1992-93: July to Nov.	2,609	2,322	53	805
1993-94: July to Nov.	2,835	2,628	54	946

(a) See paragraph 5, Explanatory Notes. (b) See paragraph 6 to 8, Explanatory Notes.

TABLE 4. READY MIXED CONCRETE (a)
(*000 cu. m)

Period	NSW	Vic.	Qld	SA	WA (596.01)	Tas.	NT	ACT	Australia
1990-91	5,076	2,984	3,663	951	1,042	270	94	207	14,286
1991-92	4,688	2,506	3,647	856	1,000	246	116	224	13,282
1992-93	4,633	2,927	4,105	936	1,234	254	111	275	14,475
1992 —									
September	416	189	346	63	109	18	12	23	1,177
October	410	254	377	80	114	24	10	25	1,294
November	375	230	353	84	103	22	8	20	1,195
December	328	236	341	82	100	23	8	17	1,135
1993 —									
January	277	186	257	70	84	18	7	12	912
February	374	234	322	76	96	20	6	23	1,151
March	417	293	343	93	116	27	10	25	1,324
April	371	266	321	78	99	22	9	23	1,190
May	439	289	354	83	109	24	10	26	1,334
June	387	259	387	79	109	21	11	28	1,281
July	380	259	380	81	107	19	11	24	1,260
August	r 408	235	393	80	109	21	13	r 26	r 1,285
September	396	220	385	80	119	20	12	25	1,257
October	403	246	393	74	118	22	11	24	1,291
November	417	245	379	81	121	20	11	23	1,297
1992-93: July to Nov.	2,037	1,164	1,780	376	520	100	50	121	6,149
1993-94: July to Nov.	2,003	1,205	1,929	396	574	103	59	122	6,390

(a) Reported production of ready mixed concrete for sale as such. Excludes production used, or for use, in the same enterprise.

TABLE 5. PARTICLE BOARDS AND SIMILAR BOARDS AND SHEETS

Period	<i>Particle board and similar boards of wood or other ligneous materials (a)</i>			
	<i>Not laminated (b)</i> (634.27)	<i>Decorative melamine or D.A.P. laminates (c)</i> (634.25)	<i>Veneer sheets and sheets for plywood</i>	
			<i>Peeled</i> (634.13)	<i>Sliced</i> (634.14)
	'000 cu.m	'000 cu.m	'000 sq.m	'000 sq.m
1990-91	625	355	26,705	2,147
1991-92	643	395	31,200	2,346
1992-93	660	423	37,819	3,175
<i>1992 —</i>				
September	65	41	3,273	265
October	61	41	3,425	283
November	56	38	3,215	320
December	48	32	2,780	243
<i>1993 —</i>				
January	23	21	1,756	62
February	52	32	3,004	260
March	67	38	3,587	319
April	58	37	3,393	303
May	59	36	3,536	298
June	62	39	3,371	288
July	61	39	3,504	297
August	68	42	3,632	295
September	67	38	3,640	319
October	68	41	3,787	299
November	69	42	3,583	296
1992-93: July to Nov.	292	188	16,393	1,401
1993-94: July to Nov.	333	202	18,146	1,506

(a) Boards, whether or not agglomerated with resins or other organic binding substances. Excludes fibreboard and fibre paperboard. (b) Includes board for subsequent conversions to other purposes. (c) Excludes decorative laminated sheets simply bonded by means of an adhesive to a substrate.

TABLE 6. STAINLESS STEEL SINKS AND CERAMIC TILES

Period	<i>Sinks (inc. combination sinks) pressed steel standard size stainless (a)</i> (697.56)	<i>Glazed ceramic flags and paving, hearth or wall tiles and glazed ceramic mosaic cubes</i> (662.45)
	number	'000 sq.m
1990-91	249,158	r 3,075
1991-92	248,138	r 3,355
1992-93	264,640	n.p.
<i>1992 —</i>		
September	23,493	r 249
October	22,800	274
November	22,328	228
December	21,116	191
<i>1993 —</i>		
January	10,257	127
February	23,217	248
March	26,291	294
April	22,823	317
May	25,544	293
June	19,997	n.p.
July	22,880	n.p.
August	28,408	n.p.
September	27,364	n.p.
October	27,532	n.p.
November	26,622	n.p.
1992-93: July to Nov.	115,395	1,338
1993-94: July to Nov.	132,806	n.p.

(a) Excludes enamelled or galvanised sinks.

EXPLANATORY NOTES

Introduction

This publication is one of a series of ten containing monthly and quarterly production statistics. The titles of the other publications of this series are shown in paragraph 9.

Classification

2. Data contained in these publications are mostly based on monthly or quarterly collections conducted by the Australian Bureau of Statistics (ABS). Most items are identified by the commodity codes used in the Australian Standard Commodity Classification (ASCC), which was developed by the ABS to facilitate greater comparability of manufacturing production commodity statistics with import and export commodity statistics. In cases where data are derived from sources other than ABS collections no commodity code is shown and the source of the data is acknowledged in a footnote.

Scope and coverage

3. Manufacturing commodity statistics collected by the ABS exclude details relating to single establishment manufacturing enterprises with fewer than four persons employed and production of establishments predominantly engaged in non-manufacturing activities but which may carry on, in a minor way, some manufacturing. However, except for a few commodities, the effect on production levels and movements is marginal.

4. Annual figures shown in this publication are derived by aggregating monthly/quarterly production and relate to production during the year ended 30 June. They may differ from annual manufacturing census data which relate to the census year and, in the case of businesses unable to report on a June year basis, include details in respect of substitute accounting periods.

Seasonal adjustment and trend estimates

5. This publication contains seasonally adjusted statistics of several items. In the seasonal adjustment, account has been taken not only of normal seasonal factors but also, where appropriate, of 'working-day' effects (arising from the varying numbers of Sundays, Mondays, Tuesdays etc. in the month) and the influence of Easter and Australia Day which may, in successive years, affect figures for different months. However, care should be exercised in interpreting the figures for those months in which Christmas/New Year and Easter holidays fall as some manufacturers vary holiday shutdowns in the light of prevailing demand for their products. Details of the methods used in seasonally adjusting these and other series are available on request.

6. The smoothing of seasonally adjusted series to create trend estimates is a means of reducing the impact of the irregular component of the series. The trend estimates have been derived by applying a 13-term Henderson weighted moving average to the seasonally adjusted series.

7. While this smoothing technique enables estimates of trend to be produced for the latest month, it does result in revisions to the estimates for the most recent months as data for subsequent months become available. Generally

subsequent revisions become smaller and after 3 months have little impact on the series. There will also be revisions as a result of revisions to the original estimates and annual reviews of seasonal and 'working day' factors.

8. Users may wish to refer to the ABS Information Papers *A Guide to Smoothing Time Series — Estimates of 'Trend'* (1316.0) and *Time Series Decomposition — An Overview* (1317.0) for more detailed information on smoothing of seasonally adjusted time series data.

Related publications

9. Other ABS publications which may be of interest are:

Manufacturing Production, Australia, Preliminary (8301.0) — issued monthly

Manufacturing Production, Australia, Household Appliances and Electrical Equipment (8357.0) — issued quarterly

Manufacturing Production, Australia, Clothing and Footwear (8358.0) — issued quarterly

Manufacturing Production, Australia, Food, Drink, Tobacco, Stock and Poultry Food (8359.0) — issued quarterly

Manufacturing Production, Australia, Fibres, Yarns, Fabrics, Bedding and Floor Coverings (8360.0) — issued quarterly

Manufacturing Production, Australia, Plastics, Rubber, Paints, Detergents and Industrial Chemicals (8362.0) — issued quarterly

Manufacturing Production, Australia, Transport Equipment (8363.0) — issued quarterly

Manufacturing Production, Australia, Metal Products (8367.0) — issued quarterly

Manufacturing Production, Australia, Energy Products (8368.0) — issued quarterly

Manufacturing Production, Australia, Wood and Wood Products (8369.0) — issued quarterly

Manufacturing Production, Australia: Principal Commodities Produced, 1989-90 (8365.0) — to be released shortly

Unpublished production data is also available from the ABS Sydney office. Please contact Colin Nicholson on (02) 268 4282.

10. Current publications produced by the ABS are listed in the *Catalogue of Publications and Products, Australia* (1101.0). The ABS also issues, on Tuesdays and Fridays, a *Publications Advice* (1105.0) which lists publications to be released in the next few days. The Catalogue and Publications Advice are available from any ABS office.

Symbols and other usages

- n.p. not available for separate publication (but included in totals where applicable)
- . . not applicable
- r revised since previous issue
- n.a. not available



For more information ...

The ABS publishes a wide range of statistics and other information on Australia's economic and social conditions. Details of what is available in various publications and other products can be found in the *ABS Catalogue of Publications and Products* available at all ABS Offices (see below for contact details).

Information Consultancy Service

Information tailored to special needs of clients can be obtained from the Information Consultancy Service available at ABS Offices (see Information Inquiries below for contact details).

National Dial-a-Statistic Line

0055 26 400

This number gives you 24 hour access, 365 days a year, for a range of statistics.

Electronic Data Services

A wide range of our data is available on electronic media. Selections of the most frequently requested statistics are available, updated daily, on DISCOVERY (Key *656#). The ABS PC TELESTATS service delivers major economic indicator main features ready to download into personal computers on the day of release. The PC AUSSTATS service enables on-line access to a data base of thousands of up-to-date time series. Selected datasets are also available on diskette or CD-ROM. For more details on electronic data services available, contact Information Services in any of the ABS Offices (see Information Inquiries below for contact details).

Bookshops and Subscriptions

There are over 500 titles of various publications available from ABS Bookshops in all ABS Offices (see below Bookshop Sales for contact details). The ABS also provides a subscription service through which nominated publications are provided by mail on a regular basis at no additional cost (telephone Publications Subscription Service toll free on 008 02 0608 Australia wide).

Sales and Inquiries

Regional Offices	Information Inquiries	Bookshop Sales
SYDNEY (02)	268 4611	268 4620
MELBOURNE (03)	615 7000	615 7829
BRISBANE (07)	222 6351	222 6350
PERTH (09)	323 5140	323 5307
ADELAIDE (08)	237 7100	237 7582
HOBART (002)	205 800	205 800
CANBERRA (06)	207 0315	252 0315
DARWIN (089)	432 111	432 111
National Office		
ACT (06)	252 6007	008 020 608



Information Services, ABS, PO Box 10, Belconnen ACT 2616, or any ABS State office.



2836100011930

ISSN 1036-0085